

Condmaster® Ruby 2016 Upgrade Benefits

Condmaster Ruby 2016 is more flexible than ever. In close cooperation with users, the new version of this comprehensive and versatile software has undergone a significant design upgrade. Here is an outline of the key benefits of upgrading to Condmaster Ruby 2016.

Improved user experience with optimal flexibility

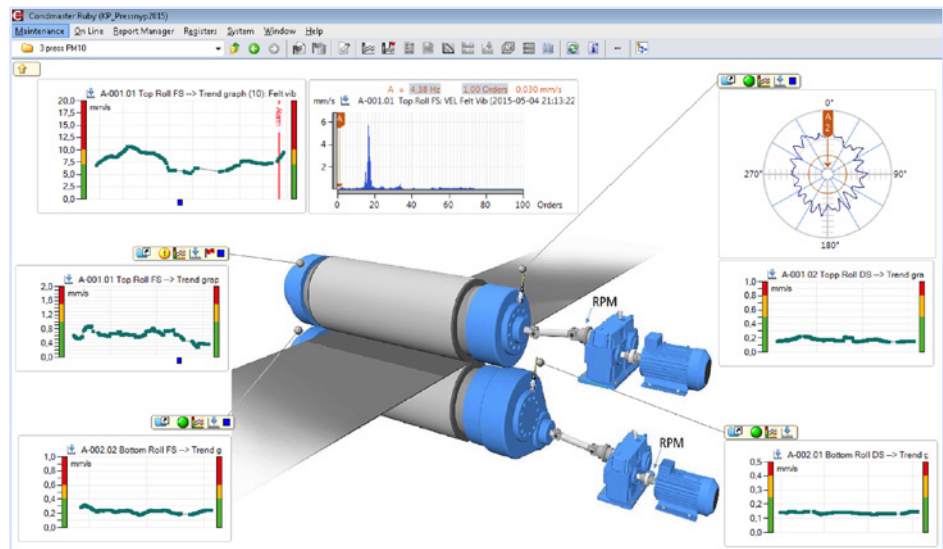
Powerful usability enhancements provide easy navigation, clear overview and refined visualization of measurement data. With a range of flexible features to customize workflows and manage the analysis of condition measurement data, the daily work of engineers and analysts is made easier and faster.

- **New generation graphics:** Condmaster Ruby 2016 has been given a clean, modern interface to increase its ease of use. Enhanced color and contrast in graphic elements provides good visibility and clarity. The graphical user interface now enables a more personalized appearance of Condmaster windows and displays. With drag and drop functionality, users can easily create a form layout of their own choice and save it as default. Layouts can also be copied between users and/or computers.

- **Graphical Overview:** In the Graphical Overview, trend graphs, spectrums and more can be added as background objects with live updates.

- **Symptoms:** The ability to show symptoms also in the time domain is a much requested feature that is now implemented.

- **Spectrum:** In the Spectrum view, each chart and plot can be resized individually. In addition, tool panels can be positioned anywhere within the Spectrum window using drag and drop functionality.



Live updates in the Graphical Overview

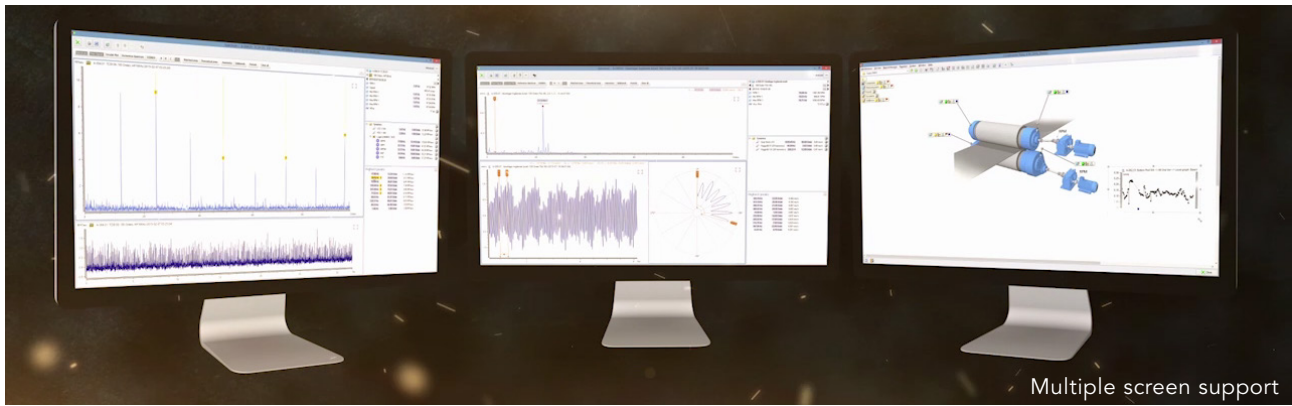
- **Software support** for the following new products:

- The **HD ENV** measuring technique for vibration monitoring
- The **DuoTech** dual technology accelerometer for shock pulse and vibration measurement



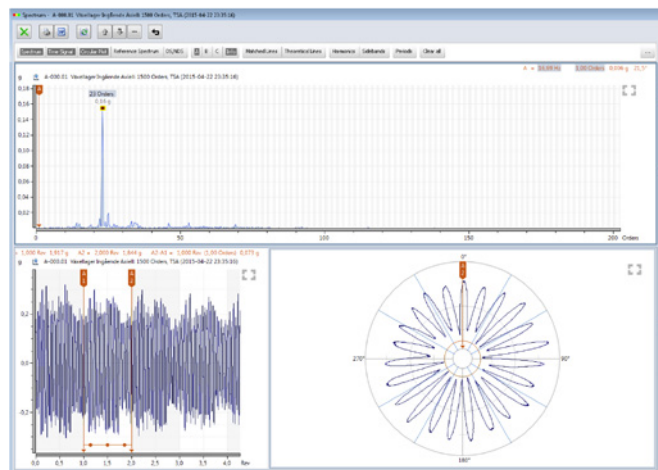
- **Post trigger;** Previously available for use with portable instruments only, this function can now be used for online measurements as well. Post trigger is used to avoid the acquisition of high readings caused by the process and let the system know exactly when to start recording relevant portions of the signal. This function is very well suited for condition monitoring of gearboxes, such as for rollers in finishing mills for instance.

- The **Measuring Point Overview** function creates a printable list of measuring assignment settings for selected measuring techniques, providing a collective overview.



Multiple screen support

- **Multiple screen support:** To enhance ease of use, windows can now be "detached" from the Condmaster main display, thus enabling quicker navigation between prioritized information and also the possibility to use multiple computer screens.
- **Circular plot;** a visual representation of gear condition, typically used with time synchronous averaging (TSA) in conjunction with gearbox analysis, condition monitoring of rollers or other machine faults which are synchronous with rotational speed.
- **Time Synchronous Averaging (TSA)** is now available also for SPM HD measurements.
- **Highest peaks:** this spectrum feature provides fast and easy visual identification of the most relevant information in a spectrum.
- **Photographs and images** are now included in the Condmaster backup routine.
- **Database communication:** Condmaster Ruby 2016 takes advantage of multiple kernels for more efficient communication with the SQL database.
- **New installer and simplified setup:** A new installer and changes in Condmaster Ruby Administrator makes installation and initial setup easier than ever.
- **Software Updater:** With the new Software Updater, new revisions of Condmaster and LinX can easily be searched for and installed. The Updater also checks automatically that the necessary versions of related software are installed, alerting the user if this is not case.



Circular plot

Upgrading

The upgrade process is straightforward. Condmaster Ruby 2016 Edition is backwards compatible and users of Condmaster Ruby 2014 or earlier versions install a single user or network version of Condmaster Ruby 2016 Edition, then transfer the contents of the old Condmaster database using a safety copy of that database. Complete instructions can be found in the Condmaster Ruby installation manual (72094).

System requirements

- Windows 8, 7 or Vista
- 1 GHz 32-bit (x86) or 64 bit (x64) processor
- 1 GB of RAM memory
- 40 GB hard disk with at least 15 GB available space
- 128 MB of graphics memory
- Microsoft SQL Server 2005 or later

For more information, please visit spminstrument.com/products/condmaster/.

